

Model IDS603



SDS LOAD CELL

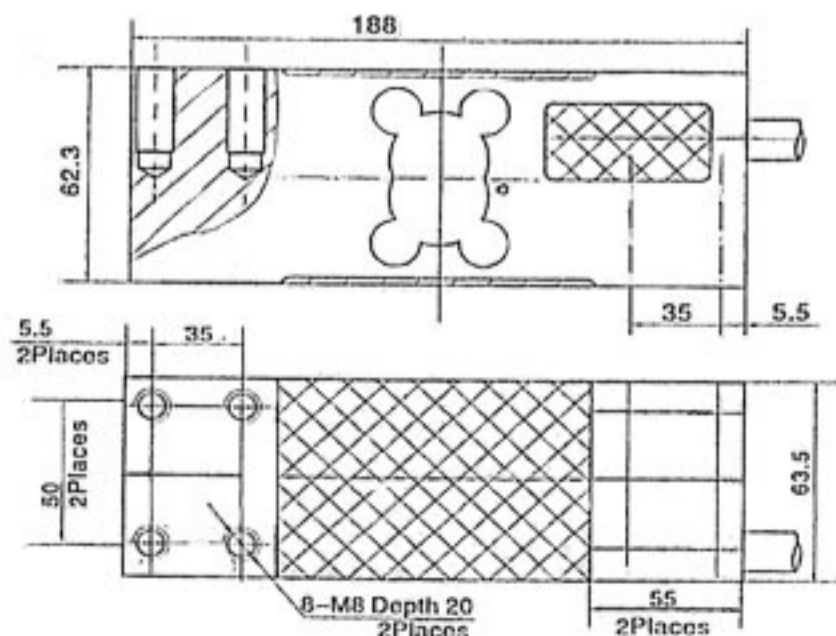


SPECIFICATIONS

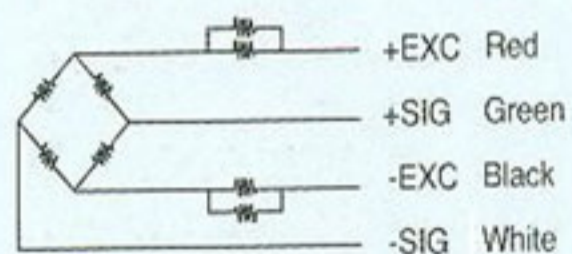
PARAMETER	VALUE	UNIT	
Capacity	100, 150, 200, 250, 300, 500, 635	kg	
Output Sensitivity	2.0 ± 0.2	mV/V	
Accuracy class	C3		
Temperature effect on zero	0.0200	%FS/10°C	
Temperature effect on sensitivity	+20°C ~ +40°C	0.0175	%FS/10°C
	-10°C ~ +20°C	0.0117	
Combined error	0.0233	%FS	
Creep	0.0167	%FS	
Input resistance	406 ± 6	Ohms	
Output resistance	350 ± 3	Ohms	
Insulation resistance	≥ 5000	Mega-Ohms	
Zero balance	2	%FS	
Temperature, compensated	-10 ~ +40	°C	
Temperature, operating	-20 ~ +50	°C	
Excitation, Recommended	5-15	V	
Safe overload	150	%FS	
Ultimate overload	300	%FS	

All specifications listed subject to change without notice.

Outline Dimension mm



Color code of cable



Dimensions and specifications are subject to change without notice

Wiring:

Cable length: 2 ± 0.1 m.